

Using Active Learning Classrooms in Building an Infrastructure for Access to Research Data

13th Munin Conference on Scholarly Publishing

Stefan Ekman, Swedish National Data Service
stefan.ekman@snd.gu.se

Helena Francke, University of Borås, Sweden
& UiT The Arctic University of Norway
helena.francke@hb.se



Background



The Course

Research data: accessibility, management, collaboration



Course Objectives



Active Learning Classroom



Developing Data Management Skills



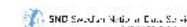
Understanding Institutional Conditions



Strengthening the DAU Network

Thank you!

stefan.ekman@snd.gu.se
helena.francke@hb.se





Background

Local data support functions:
DAU (Data Access Unit)

- Library, GIO, archive, IT, and legal
- Research experience
- Support before, during, and after a project

National network (currently 28 members)

The Course

*Research data: accessibility,
management, collaboration*

- University of Borås & Swedish National Data Service
- Professional development
- Spring 2018:
21 participants / 12 universities





Course Objectives

- to develop participants' data management skills and ability to support researchers in making data FAIR
- to increase participants' understanding of the institutional conditions for providing access to research data
- to strengthen the national network through interpersonal connections and collegial ties

Active Learning Classroom

The image shows a modern, circular active learning classroom. The room features several round white tables arranged in a circular pattern, each surrounded by ergonomic chairs with colorful seats (green, orange, and black). The walls are decorated with large whiteboards and digital displays, some framed in green and others in purple. The ceiling has recessed lighting and large, dome-shaped pendant lights. The overall atmosphere is bright and collaborative.

Blended learning.

Four physical meetings,
lunch-to-lunch.

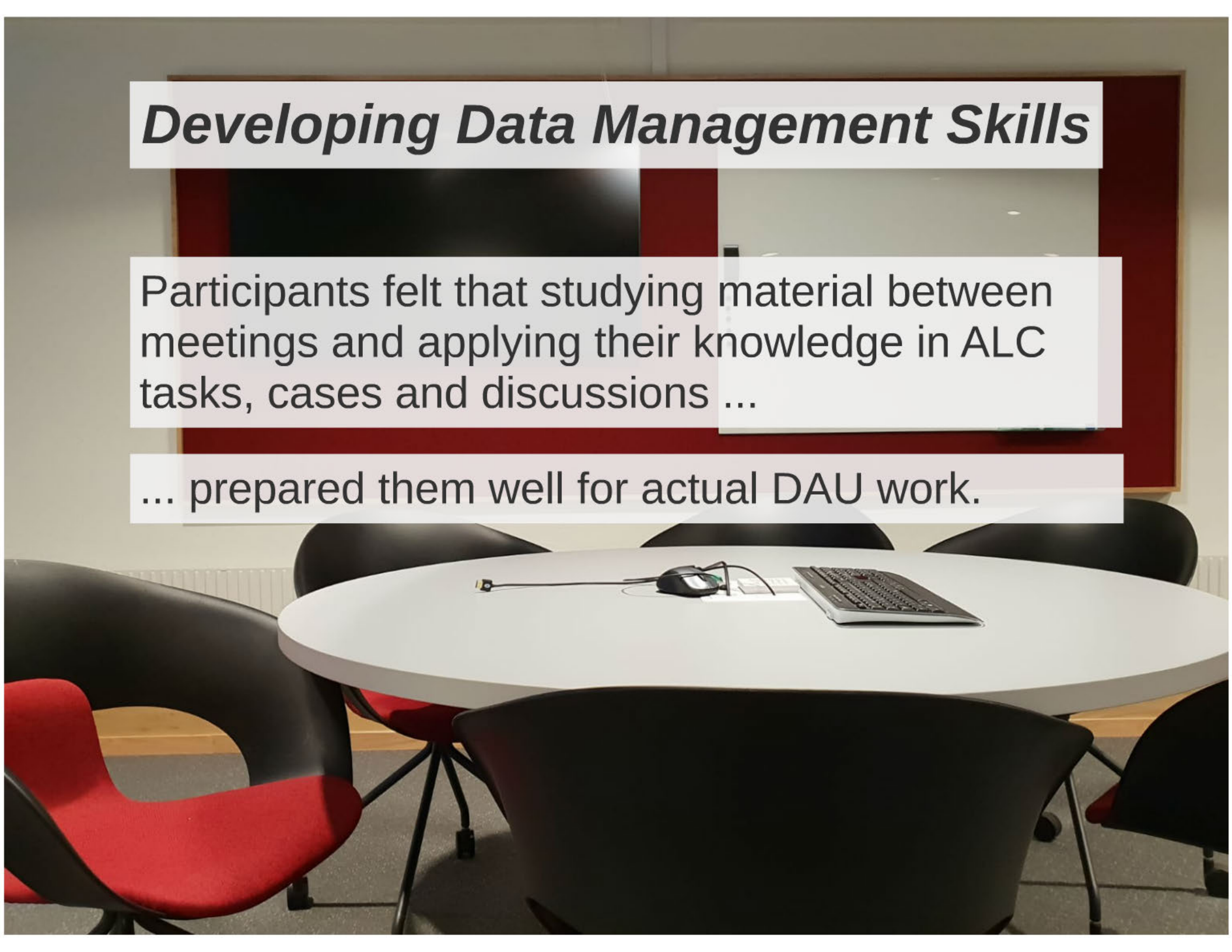
Active group work only
(instructor facilitation).

Extensive collaboration
between meetings.

Developing Data Management Skills

Participants felt that studying material between meetings and applying their knowledge in ALC tasks, cases and discussions ...

... prepared them well for actual DAU work.



Understanding Institutional Conditions

A wide range of task designs combined with a perceived relevance of the topic ...

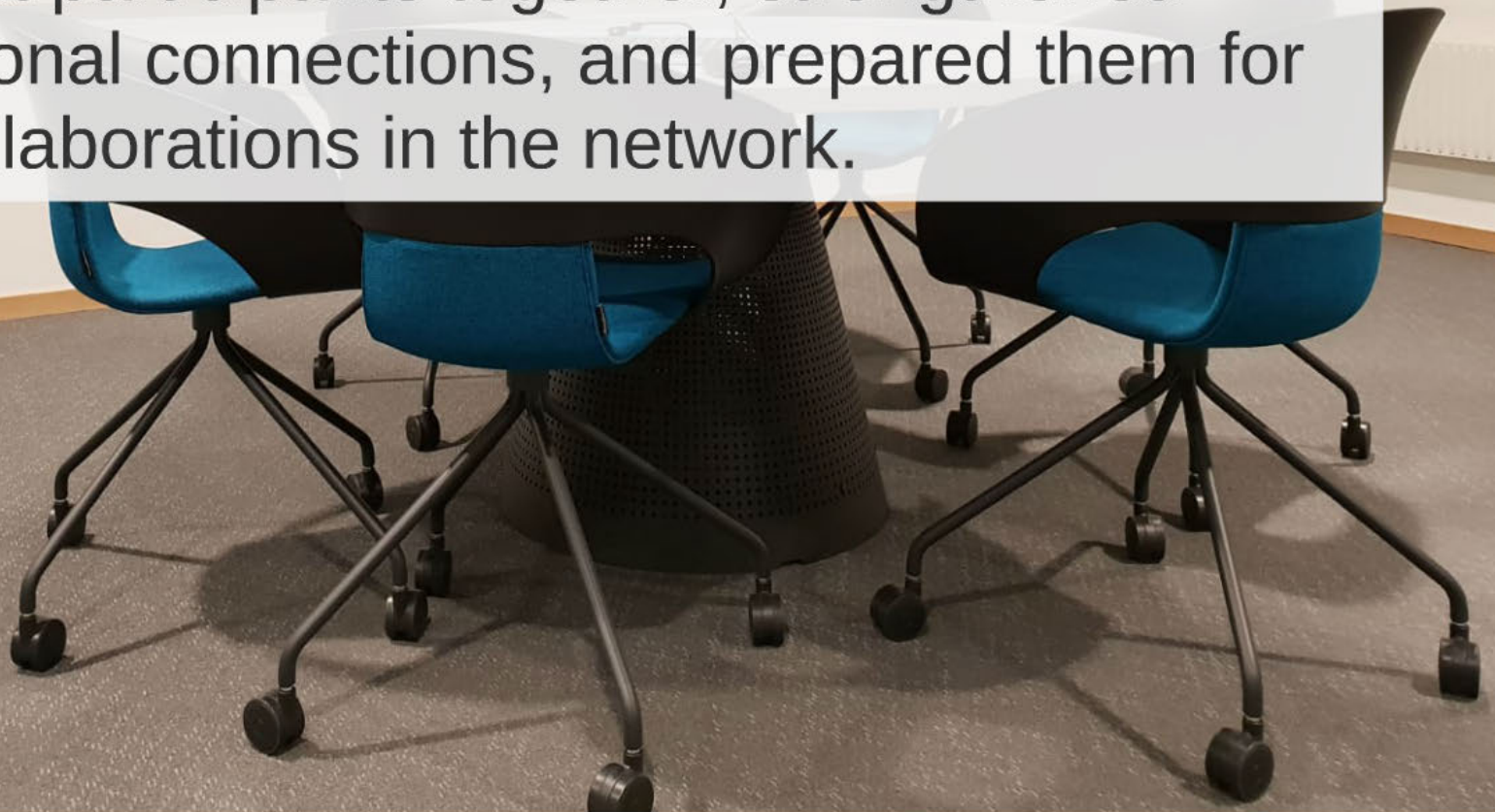
... allowed participants to engage with and relate to issues concerning institutional conditions necessary for access to research data.



Strengthening the DAU Network

Changing group composition in and between tasks and including social activities in the course ...

... brought participants together, strengthened interpersonal connections, and prepared them for future collaborations in the network.



Thank you!

Visit our poster or ask us
if you want to know more.

stefan.ekman@snd.gu.se
helena.francke@hb.se



SND Swedish National Data Service
A university consortium for research data



THE SWEDISH SCHOOL OF LIBRARY
AND INFORMATION SCIENCE
UNIVERSITY OF BORÅS

Using Active Learning Classrooms in Building an Infrastructure for Access to Research Data

13th Munin Conference on Scholarly Publishing

Stefan Ekman, Swedish National Data Service
stefan.ekman@snd.gu.se

Helena Francke, University of Borås, Sweden
& UiT The Arctic University of Norway
helena.francke@hb.se



Background

- Local data support functions:
DAU (Data Access Unit)
- Library, GIO, archive, IT, and legal
 - Research experience
 - Support before, during, and after a project
- National network (currently 28 members)



The Course

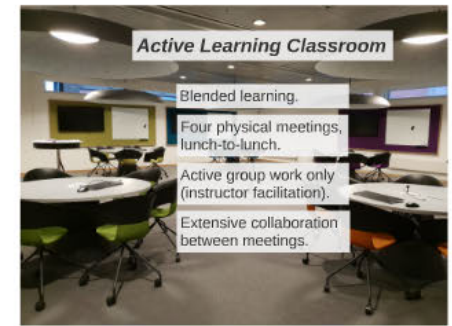
Research data: accessibility, management, collaboration

- University of Borås & Swedish National Data Service
- Professional development
- Spring 2018:
21 participants / 12 universities



Course Objectives

- to develop participants' data management skills and ability to support researchers in making data FAIR
- to increase participants' understanding of the institutional conditions for providing access to research data
- to strengthen the national network through interpersonal connections and collegial ties



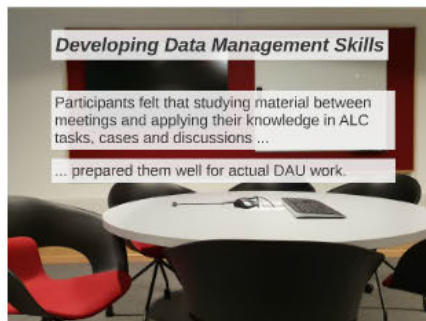
Active Learning Classroom

Blended learning.

Four physical meetings, lunch-to-lunch.

Active group work only (instructor facilitation).

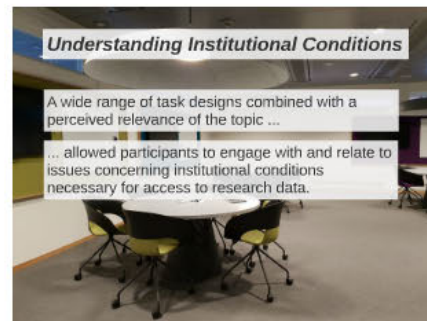
Extensive collaboration between meetings.



Developing Data Management Skills

Participants felt that studying material between meetings and applying their knowledge in ALC tasks, cases and discussions ...

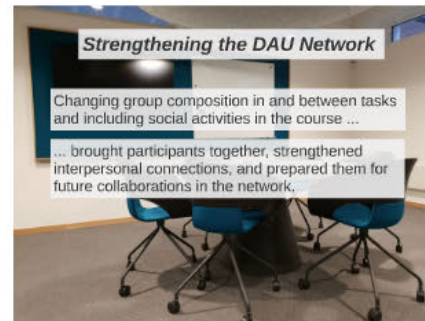
... prepared them well for actual DAU work.



Understanding Institutional Conditions

A wide range of task designs combined with a perceived relevance of the topic ...

... allowed participants to engage with and relate to issues concerning institutional conditions necessary for access to research data.



Strengthening the DAU Network

Changing group composition in and between tasks and including social activities in the course ...

... brought participants together, strengthened interpersonal connections, and prepared them for future collaborations in the network.



Thank you!

Visit our poster or ask us if you want to know more.

stefan.ekman@snd.gu.se
helena.francke@hb.se

