

The logo for the Warwick Institute of Advanced Study, featuring a stylized white mountain peak above the word "WARWICK" in purple capital letters.

INSTITUTE OF ADVANCED STUDY

The Twin Dilemma

Successfully Operating a Scholar-Led Journal to Enable Discourse and Empower Researcher Development

Dr Gaz J Johnson
Managing Editor-in-Chief, Exchanges
gareth.johnson@warwick.ac.uk
@ExchangesIAS
exchanges.warwick.ac.uk

Munin Conference on Scholarly Publishing
18th November 2020



Context

- *Exchanges: The Interdisciplinary Research Journal*
 - Founded 2013 early career programme fellows
 - Published by Institute of Advanced Study (IAS), Warwick
 - Peer-reviewed, OA, online, scholar-led, biannual
- ECR focus for Board and contributors
 - Peer-reviewed & editorially reviewed items included
 - Multidisciplinary global contributors & readership
- Early submissions from Warwick based authors
 - Content bias overtaken by global contributors
 - Increasingly decoupling from institutional-centricity

The logo for the Warwick Institute of Advanced Study (IAS) features a stylized white mountain peak shape above the word "WARWICK" in a bold, purple, sans-serif font. Below "WARWICK" is a thin horizontal line, and underneath that is the text "INSTITUTE OF ADVANCED STUDY" in a smaller, grey, sans-serif font.

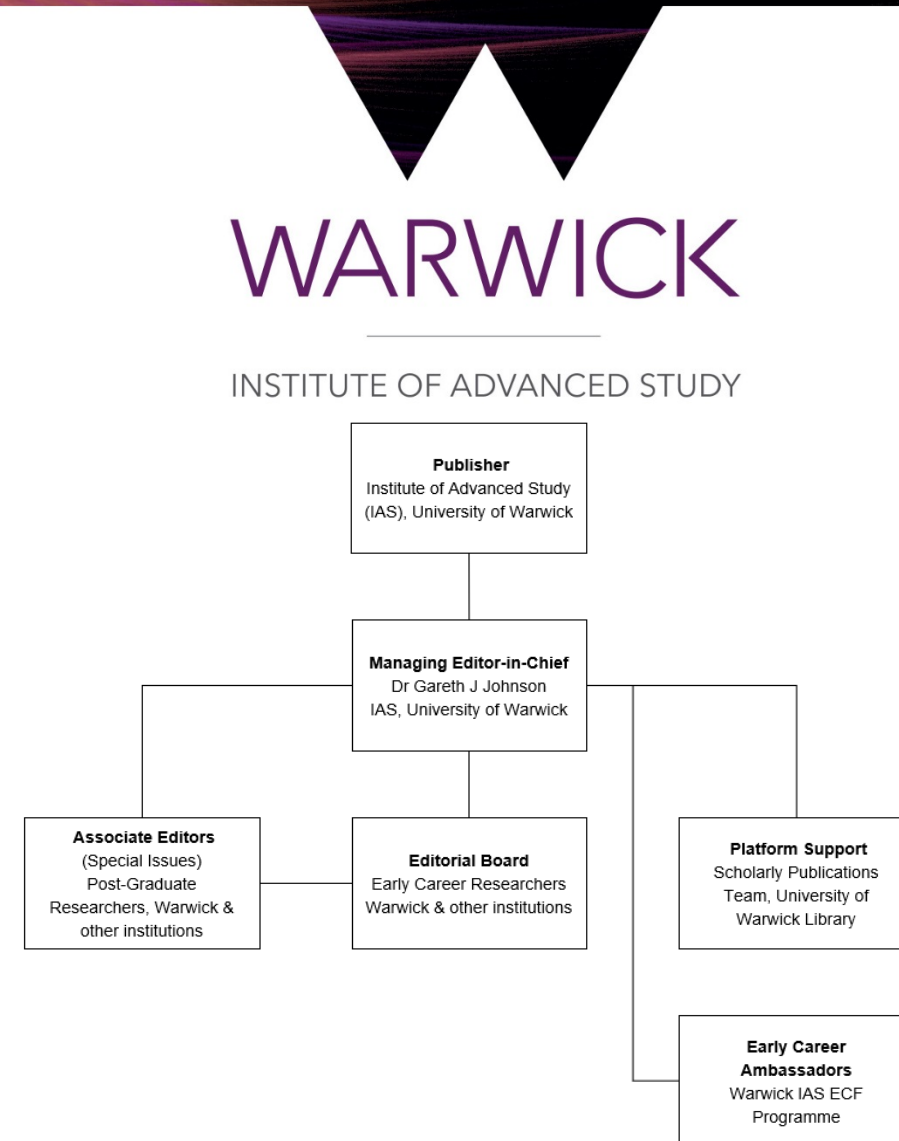
INSTITUTE OF ADVANCED STUDY

'Warwick's IAS is dedicated to advancing new research ideas, characterised by...creating synergies between traditional research discipline...[and] supporting early career researchers in the development of their independent careers' (IAS, 2020)

[\(\[ISSN 2053-9665\]\(https://doi.org/10.1017/S20539665\)\)](https://doi.org/10.1017/S20539665)

Operational Model

- Fuchs & Sandoval's diamond model
 - Libre OA ideal (CC-BY)
- Operations resourced in three ways
 - Warwick Press: library publishing initiative, OJS
 - Chief Editor: salaried (p/t), based at IAS
 - Board: Sub-editor role (review/copyediting)
- Editorial Board initially Warwick ECRs
 - Now recruited from Warwick's Global Partners
 - Disciplinary breadth & geographic diversity focus
 - Plus associate editors...



Mission & Relevance

- (1) Enable & inform interdisciplinary discourse
 - Quality assured platform for ECRs to contribute
- (2) Developmental agenda for contributors
 - Support, guide & uplift authors
 - Provide contributor development opportunities
- (3) Increase contributors' professional visibility
 - Social media, podcasts & other publicity
- Less advocacy, more positivity & confidence
 - Plus enhanced skills & experience

The logo for the Warwick Institute of Advanced Study features a stylized mountain range silhouette above the word "WARWICK" in a bold, purple, sans-serif font.

INSTITUTE OF ADVANCED STUDY

'The key objective of this journal arises from Warwick's ambition to provide an intellectual gateway for research engagement at a regional, national and international level.

Interdisciplinary research is an increasingly important part of our academic future and this publication seeks to provide a spot-light for non-traditional collaborations and those keen to push the barriers of their disciplinary activity.' (Thrift, 2013: 2)

Challenges

- Financing (institutional patron) relatively assured
- Low impact ≈ lack of higher quality ingest
 - Barriers to entrance to valorised indexes
 - Smaller reviewer pool requires more recruitment
- Additional necessary editorial labour time
 - Increasing reputational capital through promotion
 - Potential loss of experienced team
 - Volatility & motility of ECRs
- Developer time & FOSS community priorities
 - Extensive wishlist, limited progress

WARWICK

INSTITUTE OF ADVANCED STUDY

Exchanges

The Interdisciplinary Research Journal
Volume 8, Issue 1 (Autumn, 2020)



Issue Highlights:

- Graphic designers: dramaturgy, narrative & revelation
- Improving learning for non-native teachers of English
- Role-play and English language acquisition
- Truthfulness & the autobiographical pact
- Unpicking the 'how' creativity works

ISSN 2053-9665

Special Issues

- Four special issues planned since 2019
 - In addition to regular publications
 - Instigated by ECR researcher approaches
 - Associated with conferences & events
- Recognised benefit to title & mission
 - Markers of esteem & recognition
 - Diversification of audience & visibility
- Editorial labour would exceed resource
 - Offered opportunity to experiment
 - Explore ways to meet developmental goals

WARWICK

INSTITUTE OF ADVANCED STUDY

Theme	Author Participation	Publication
Cannibalism	Invited authors	January 2020
Climate Fiction (CliFi)	Open call	Jan 2021
Art Students: Historic Experiences	Invited authors	Summer 2021
Cultural Representations of Nerds	Open call	Autumn 2021

Associate Editors

- Associate editors drawn from PGR community
 - Focus on reviewing & copyediting only
- Offer of experiential benefits from participation
 - Applicable to future authorial & editorial contributions
 - But limited material (tangible) benefits
 - Professional satisfaction & recognition
- Developed skills to include:
 - Process, workflows & platforms
 - Authorial styles & editorial abilities
 - Communication, relationships & networks
 - Ethics, policy & licences

WARWICK

INSTITUTE OF ADVANCED STUDY

Exchanges

The Interdisciplinary Research Journal
Volume 7, Issue 2 (January, 2020) - Special Issue



Issue Highlights:

- 'Bites here and there' conference, a critical reflection
- Perceptions, misconceptions & depictions of cannibalism
- Werewolves, corpse medicine, magic and madness
- Cinematic and literary representations of cannibalism
- Cultural insights into global anthropophagy perceptions

ISSN 2053-9665

Associate Editor Benefits

- Publishing Skills
 - Formatting, layout, workflows
 - Platforms & technologies
 - Understanding peer-review
- Personal Skills
 - Subject knowledge & self-confidence
 - Communications
- Professional Skills
 - Visibility
 - Work/Life balance
 - Empathy & tolerance

"I think it's broadened kind of the understanding I have of what actually goes on behind the processes of peer review and why things take a long time" Freya

WADSWICK

"As an academic you're not ever just doing one thing. So getting used to balancing different academic tasks as well as work/life balance I think [is] helpful" Nora

"It was very interesting to try to be yourself, to put yourself in somebody else's shoes, like 'how do I do this in an empathic way?'"
Giulia

Editorial Labour

- Tangibly rewarding associate editors difficult
 - Local financial rules impede reward ability
 - Achieving recognition beyond Warwick difficult
- Expectations of contributions
 - Unresolved tension between local & other
 - Concerning especially for associate editors
 - Sacrifice of ideology to operationalisation
- Routes to recognition exist
 - Sufficient return on editorial time investment?
 - Conversations & explorations with Warwick Press

WARWICK

INSTITUTE OF ADVANCED STUDY



Concluding Thoughts

- Associate editors gained authentic experiences
 - Unanticipated benefits also manifested
- Special issue production a learning journey
 - Experiences will shape future efforts & recruitment
 - New associate editors benefits more clearly defined
- Tangible rewards remain elusive
 - Long term career benefits uncertain

"I really enjoyed it, and I'm really excited there's another issue coming out...I like the idea of reading people's work, and engaging with it." Guilia

"I enjoyed being exposed to areas of research that I wouldn't usually come across." Sophie

"We don't really get the chance to actually do the editorial work and sort of see what the behind the scenes look like...it was a brilliant opportunity...I think that overall, it was a very, very positive experience." Melissa

Contact

Institute of Advanced Study,
Zeeman Building, University of Warwick, UK

- Journal: exchanges.warwick.ac.uk
- Email: gareth.johnson@warwick.ac.uk
 - Twitter: @ExchangesIAS & @llordllama
 - Podcast: anchor.fm/exchangesias
 - Blog: blogs.warwick.ac.uk/exchangesias/
 - LinkedIn: www.linkedin.com/groups/12162247/

WARWICK

INSTITUTE OF ADVANCED STUDY

Exchanges

The Interdisciplinary Research Journal

Volume 8, Issue 1 (Autumn, 2020)



Issue Highlights:

- Graphic designers: dramaturgy, narrative & revelation
- Improving learning for non-native teachers of English
- Role-play and English language acquisition
- Truthfulness & the autobiographical pact
- Unpicking the 'how' creativity works