

# Is open publishing really open to the public?

## Co-designing public-facing materials to accompany published research

Dr Elizabeth Ford

Reader in Health Data Science

Brighton and Sussex Medical School, UK

# Brighton, Southeast England





Oxford, UK

<https://akriviahealth.com/>

**“5.1+ million de-identified patient records from some of the largest mental health providers in the UK”.**

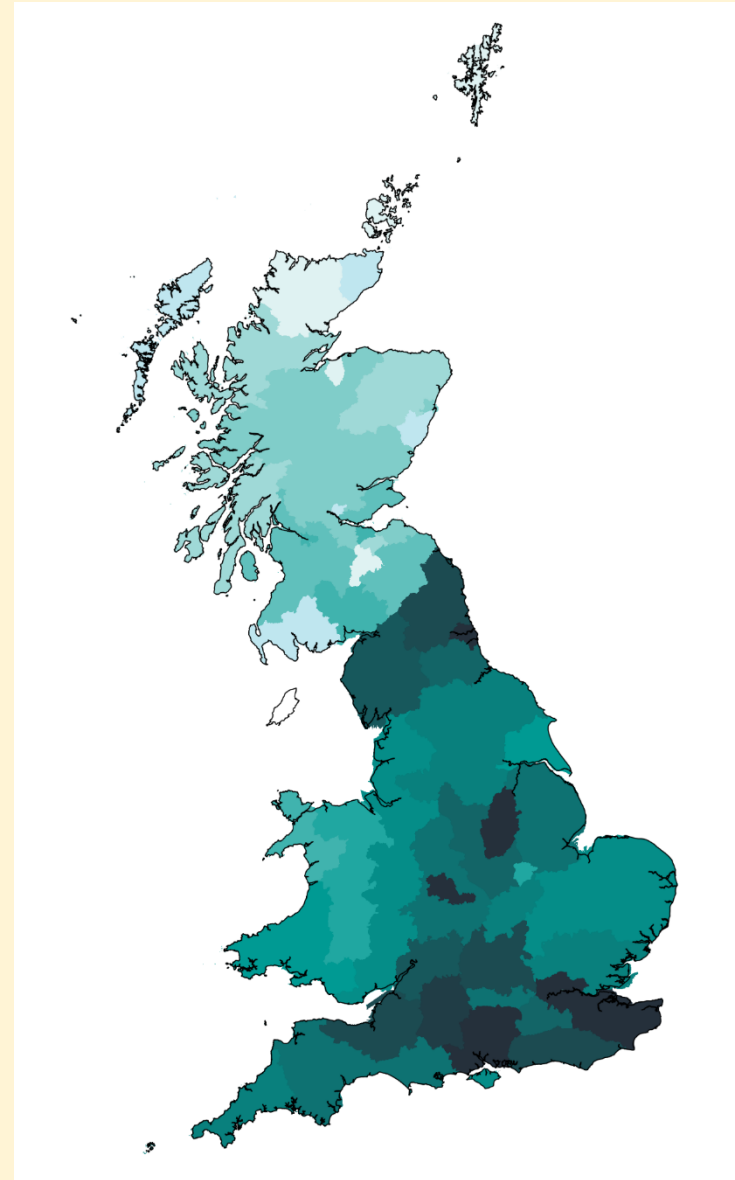


# Who are Akrivia?

They are a company that works with NHS trusts specialising in **mental health and dementia care**.

Starting as a grant-funded organisation in 2009, Akrivia spun out from the University of Oxford in 2019 with support from the **National Institute for Health Research**.

Akrivia's mission is to improve patients' lives by **changing the trajectory of mental health and dementia research**, so we can better understand these conditions and provide better care.



# What do they do? Using Natural Language Processing to Structure Mental Health Clinic Data

Select informative clinical notes

Patient, 78, male, retired constructions worker. Prior history of depression on his 50s with intrusive thoughts, which has been properly controlled with SSRI, citalopram 20 mgs daily. Complains now about memory deficits and confusion in the morning. MMSE today was 24 out of 30. Score was 27/30 on May 2015. Possible Alzheimer's.

Annotate clinical notes

Patient, 78, male, retired constructions worker. Prior history of depression on his 50s with intrusive thoughts, which has been properly controlled with SSRI, citalopram 20 mgs daily. Complains now about memory deficits and confusion in the morning. MMSE today was 24 out of 30. Score was 27/30 on May 2015. Possible Alzheimer's.

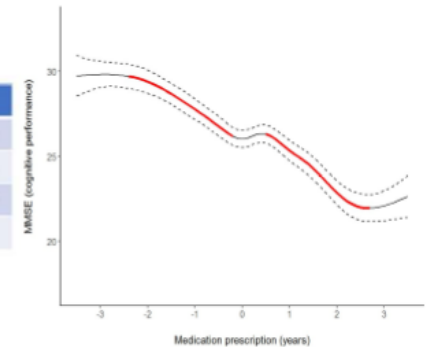
Train and fine tune AI model



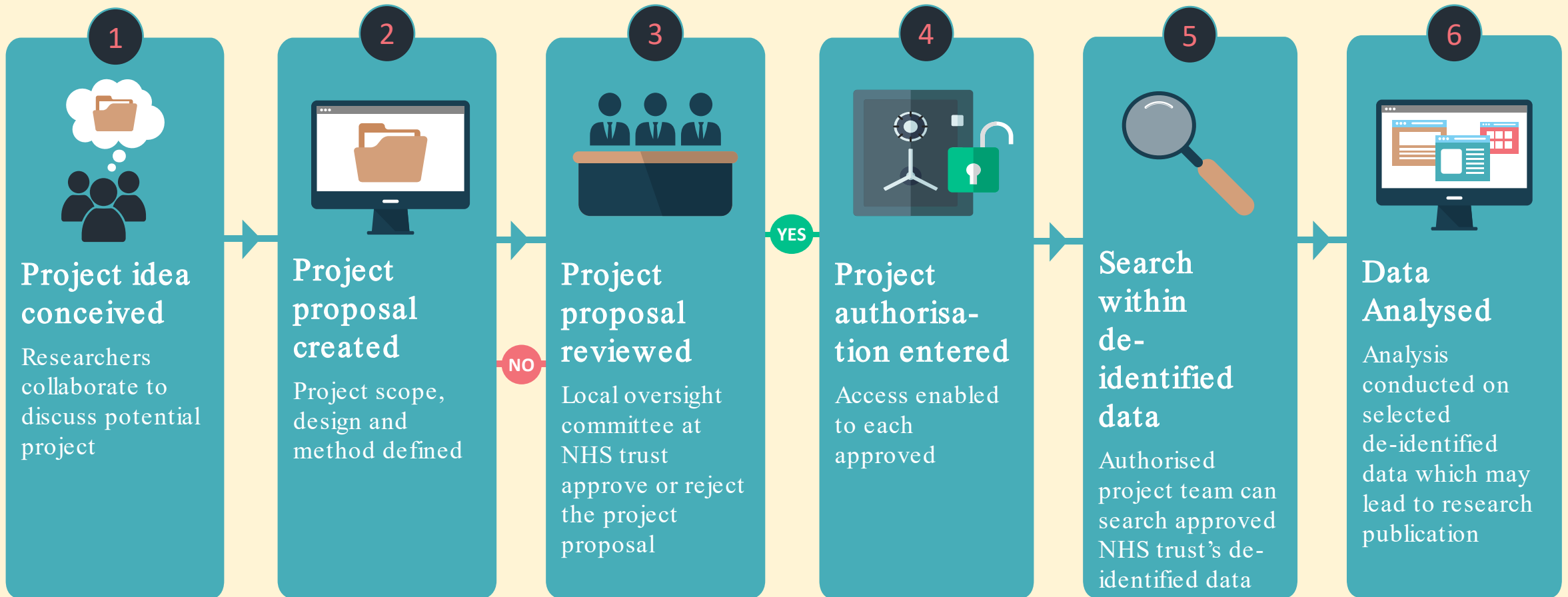
Structured data

| Concepts   |                    |       |            |
|------------|--------------------|-------|------------|
| drugs      | symptom            | score | diagnosis  |
| citalopram | intrusive thoughts | 24    | depression |
|            | memory deficits    | 27    | Alzheimer* |
|            | confusion          |       |            |

Analysis of data



# How Akrivia Supports Research with Sensitive Data



# How can we make Akrivia's research more OPEN?

## Aims

Consultation on content and layout of webpage

Coproduction of an infographic

Tailor information to patients, public and NHS staff

# Our Approach: Participatory Co-Design



## **Without making assumptions in advance:**

- We invited 6 patient representatives from Southeast England to 2 sessions.
  - Participants included people who were: deaf, dyslexic, autistic, had anxiety and chronic pain.
1. 2-hour Online Pre-Workshop Information-Giving Session
  2. Face to Face day-long Workshop to design information materials
    - In London
    - Catering provided
    - Participants paid £25 per hour, travel expenses paid



# Workshop content

## Pre-workshop session:

- Aims and ways of working together
- Who are Akrivia
- Understanding Akrivia's Data
- What is done with the data?
- What are the benefits of what Akrivia does?
- Reading through the current website content and discussing.

## In-person workshop:

- Aims and ways of working together
- Recap
- Further discussion of website
- Design Infographic content and sharing:
  - What? Content
  - How? Format and visuals
  - Where? How to share it
- Infographic mock up and review

Value for the NHS | These must be included in infographic

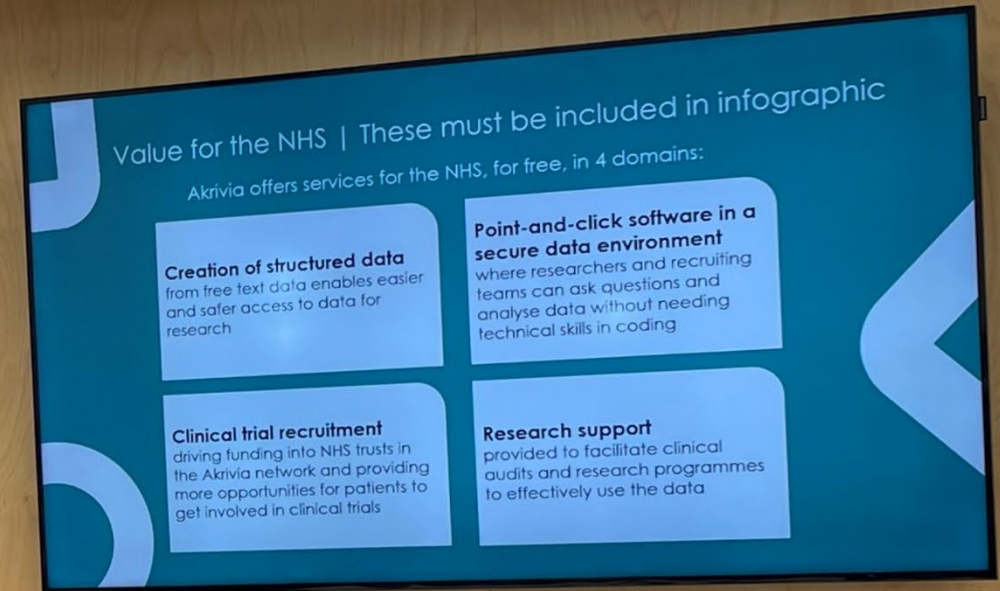
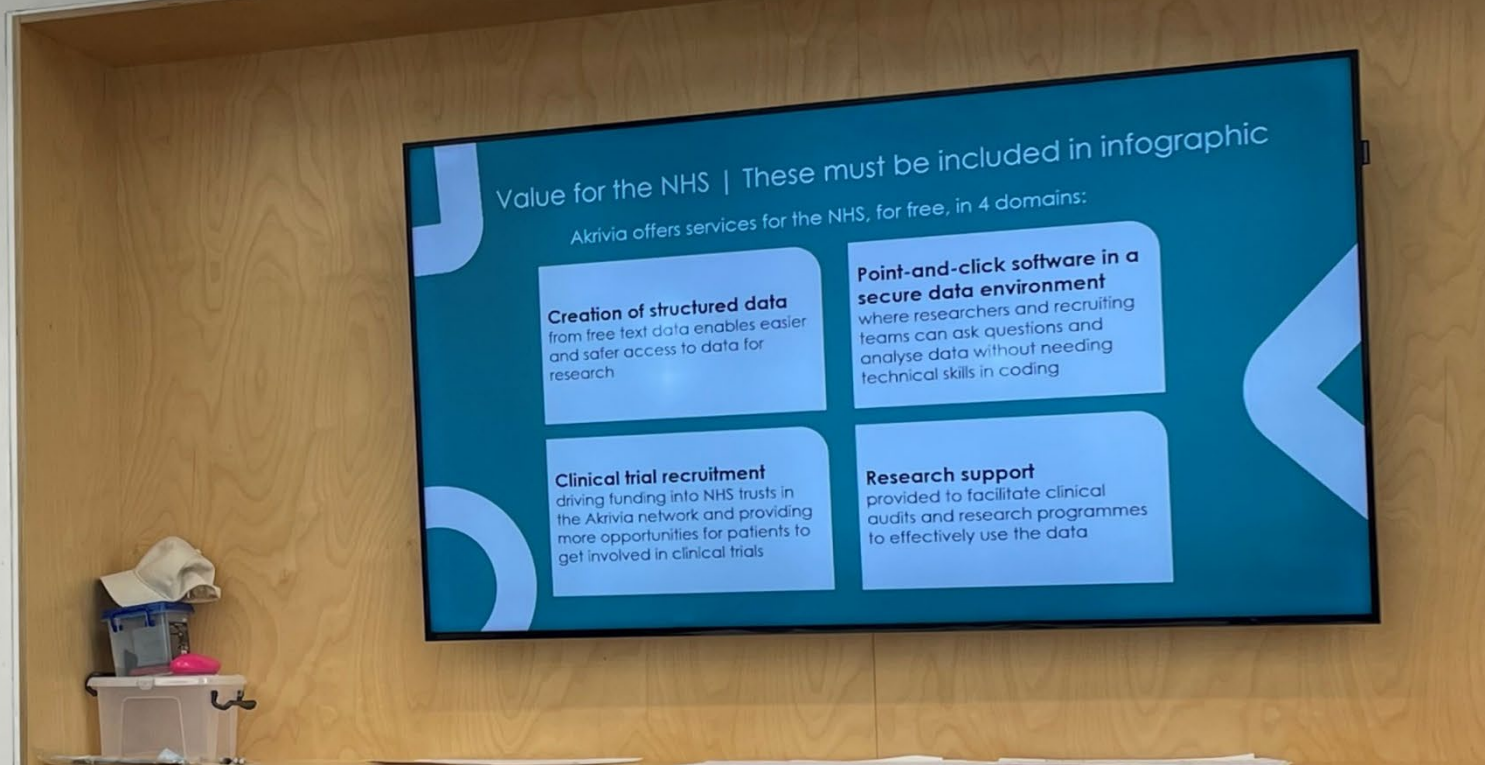
Akrivia offers services for the NHS, for free, in 4 domains:

**Creation of structured data**  
from free text data enables easier and safer access to data for research

**Point-and-click software in a secure data environment**  
where researchers and recruiting teams can ask questions and analyse data without needing technical skills in coding

**Clinical trial recruitment**  
driving funding into NHS trusts in the Akrivia network and providing more opportunities for patients to get involved in clinical trials

**Research support**  
provided to facilitate clinical audits and research programmes to effectively use the data



# Task overview

For each task we will do the following four activities:

01

## Generation

**5 mins per task**

After presenting each question, we will individually generate ideas on post-it notes.

02

## Sharing

**10 mins per task**

The facilitators will then share the ideas with the group.

03

## Discussion

**15 mins per task**

As a group we will then discuss and elaborate on the ideas, including grouping them together.

04

## Prioritisation

**5 mins per task**

You will each get 5 points which you can award to ideas which you think are the most important. You can award multiple points to one idea.

# What participants said should be included in the infographic

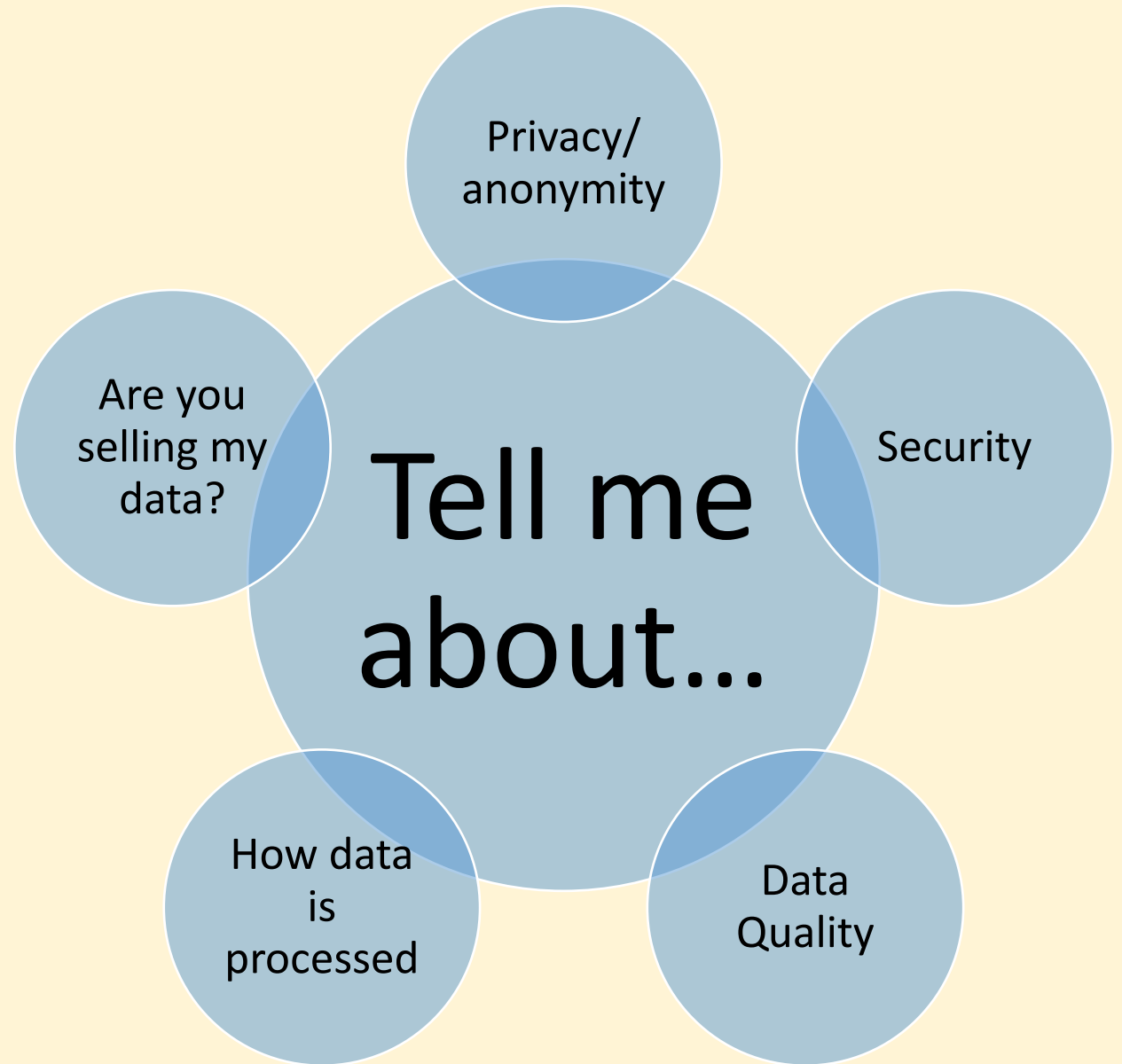
## NHS / Public Benefits

Why do it? What problem does it fix?

How does research improve patient care?

What types of health conditions are studied?

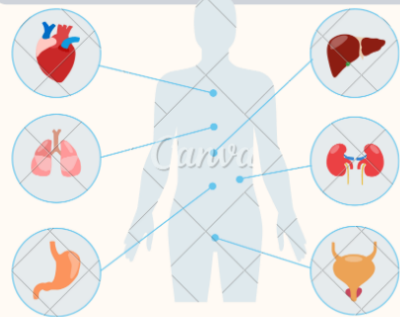
How will you address higher prevalence of problems for minorities?



Show data streams & privacy levels in images




- Akrivia Health are a company who work with healthcare organisations to make structured data out of unstructured mental health and dementia data. This allows research to be done on real world data
- We understand that transparency is key for building public trust in the use of health data in research, therefore this infographic is to explain who we are and what we do
- **Insert USP - how is Akrivia different to other people?**
- We are able to offer their services free to the NHS by providing secure access to the anonymised data for private research companies to conduct research on




Diagrams and Images – attractive, clear, cheerful. Avoid meaningless ones


Use boxes and headlines to divide information up



have similar diagram to online workshop slides of the technical architecture - making it clearer, where Akrivia come in, where NHS/un's come in etc. and to include info of how data is anonymised



Like image of health improving - mental and physical - impacting whole person/communities



### HOW DOES THE NHS BENEFIT?

We offer our services to the NHS free of charge. NHS data on mental health is often free text and difficult to analyse. We use Natural Language Processing to make structured data out of unstructured data such as doctors notes. We make this data available to the NHS in an easy to use format with intelligent filters. We also facilitate research projects into the data, and assist the NHS in setting up clinical trials.

### HOW DO WE DO IT?

We are provided access to data by the NHS. We use artificial intelligence to restructure the data into tables. We also de-identify data to make it anonymous.

### PRIVACY AND SECURITY


Any data held by Akrivia is stored in best-in-class cloud environment called Amazon Web Services. This means any data is safe, private and only accessible by approved individuals.

### WHAT DO WE ACHIEVE?

1 in 8 people are living with a mental disorder, yet just 4.6% of health research focuses on mental health. Because mental health data is difficult to work with and is highly sensitive, we reorganise the data to make it easy to work with. Add something about: Talk about holistic health data, research solutions created, opportunities for patients.

Colours: Bright but not too bold. High, but not stark, contrast for accessibility.

**What does my data look like?**  
Scan the QR code to have a look at some example data.



Include a link to simple website and data platform examples so people can find out more

First infographic mock-up made in workshop

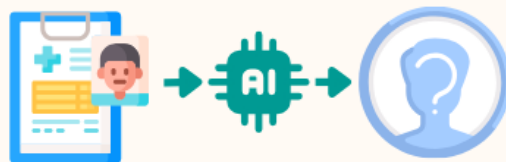


- Akrivia Health are a company who work with healthcare organisations (such as NHS trusts) to support mental health and dementia research being done on data collected as part of patient care.
- We are unique in our focus on mental health and dementia: according to the World Health Organisation, 1 in 8 people are living with a mental disorder, yet just 4.6% of health research focuses on mental health.
- We are able to offer our services for free to the NHS by providing secure access to an anonymised version of the healthcare data for private research companies to conduct research on. Data is not sold, only accessed.
- We understand that transparency is key for building public trust in the use of health data in research, so we have co-developed this infographic with a group of patients to explain who we are and what we do.



## HOW DOES THE NHS BENEFIT?

We began in the NHS, so we provide our services to the NHS free of charge. Because mental health data is difficult to work with and is highly sensitive, we reorganise the data to make it easy to work with. We make this data available to the NHS in a secure research platform with intelligent filters. We also support good use of the data in research projects, and assist the NHS in using this data to identify patients suitable for clinical trials.



## HOW DO WE DO IT?

The NHS grant us to securely copy healthcare data they choose. We de-identify the data, removing information like patient names. As a lot of mental health data is free text, such as doctors' notes which are hard to use in research, so we use artificial intelligence to structure free text data into tables. We then provide tools and support to use this data in research.



## WHAT ABOUT PRIVACY AND SECURITY?

Any data held by Akrivia is stored in best-in-class cloud environment called Amazon Web Services. This means any data is safe and only accessible by approved individuals. By structuring free text data into tables, we are minimising the need for NHS researchers to read private patient information.



## WHAT DO WE ACHIEVE?

Our approach to improving access to healthcare data supports a more holistic view of patient health, while improving patient privacy. The data is actively used by NHS teams to conduct research to improve the quality of their services, such as addressing inequalities in healthcare.

## What does the data look like?

Scan the QR code to have a look at some example data.



Use the same units of measurement to drive points home quicker



We are a company who work with healthcare organisations (such as NHS trusts) to support mental health and research being done on data collected as part of

Our unique in our focus on mental health and dementia: according to the World Health Organisation, 1 in 8 people are living with a mental disorder, yet just 4.6% of health research focuses on mental health.

- We are able to offer our services for free to the NHS by providing secure access to an anonymised version of the healthcare data for private research companies to conduct research on. Data is not sold, only accessed.
- We understand that transparency is key for building public trust in the use of health data in research, so we have co-developed this infographic with a group of patients to explain who we are and what we do.

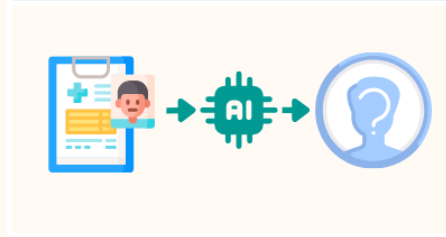


Human figure: looks unsettling and like a data humanoid; remove as it adds no meaning



### HOW DOES THE NHS BENEFIT?

We began in the NHS, so we provide our services to the NHS free of charge. Because mental health data is difficult to work with and is highly sensitive, we help the NHS to reorganise the data to make it easy to work with. We make this data available to the NHS in a secure research platform with intelligent filters. We also support the NHS in using this data to assist the NHS in using this data to identify patients suitable for clinical trials.



### HOW DO WE DO IT?

The NHS grant us to securely copy healthcare data they choose. We de-identify the data, removing information like patient names. As a lot of mental health data is free text, such as doctors' notes which are hard to use in research, so we use artificial intelligence to structure free text data into tables. We then provide tools and support to use this data in research.



### WHAT ABOUT PRIVACY AND SECURITY?

Any data held by Akrivia is stored in best-in-class cloud environment called Amazon Web Services. This means any data is safe and only accessible by approved individuals. By structuring free text data into tables, we are minimising the need for NHS researchers to read private patient information.



### WHAT DO WE ACHIEVE?

Our approach to improving access to healthcare data supports a more holistic view of patient health, while improving patient privacy. The data is actively used by NHS teams to conduct research to improve the quality of their services, such as addressing inequalities in healthcare.

### What does the data look like?

Scan the QR code to have a look at some example data.



Colours: The alternating colours and muted tones are easy on the eyes.

There are more opportunities to simplify the text further.

Second infographic mock-up made following feedback

## Who are “Akrivia Health” and why do we exist?

- According to the World Health Organisation, **over 12%** of the world’s population is living with a mental health condition\*, **yet less than 5% of health research focuses on mental health\*\***. Akrivia Health exists to change this.
- With an exclusive focus on mental health and dementias, we work with healthcare organisations (such as the NHS) to support research being conducted on data collected as part of patient care – in order to improve treatments and patient lives.
- We understand that transparency is key for building public trust in the use of health data in research, so **we have co-developed this infographic with a group of patients to explain who we are and what we do.**

\* World Health Organisation. (2022). World Mental Health Report. <https://www.who.int/publications/i/item/9789240049338>.

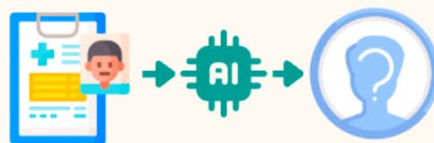
\*\*World Health Organisation. (2020). Mental Health Atlas 2020. <https://apps.who.int/iris/handle/10665/345946>



## How does the NHS benefit?

We provide our services to the NHS **free of charge**. Because mental health data is complex and highly sensitive, we remove personal information and reorganise the data to **make it easy to work with**. We then share the reorganised data with the NHS in a secure research platform with intelligent filters.

We also help NHS researchers to understand and use the data for research, and help the NHS to find patients who might be a **great fit** for different types of research.



## How exactly do we do this?

The NHS lets us securely copy healthcare data. We remove personal information like patient names and addresses. As a lot of mental health data is handwritten, such as doctor’s notes, this can be hard to use in research.

We therefore use artificial intelligence within a secure environment to sort this information into tables, which makes it much easier for researchers to use **without them having access to private information**. We then teach NHS researchers how to use it.



## What about privacy and security?

All data held by Akrivia is **safely stored in a secure cloud environment** hosted by Amazon Web Services (who have no visibility or ownership of this data, as it has been encrypted). This means that the data can only be accessed by approved individuals. Our Information Governance and IT Security teams also work hard to proactively ensure our system is secure at all times.



## What do we achieve?

Through this work, we are able to provide a **fuller picture of patient health** while improving patient privacy. This enables NHS teams to conduct research to improve the quality of their services, such as **addressing inequalities in healthcare**.

## What does the data look like?

Scan the QR code to have a look at some example data.





# Generalisable lessons for making open science infographics for the public



- **Design:** Cut back the **text** to the bare minimum



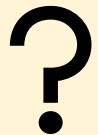
- **Design:** Go for simplicity and visual clarity, not clutter/distraction.



- **Choice of content:** What is important to you (the scientist) may not be as important to the public



- **Clarity:** Words which have obvious meaning to you may be ambiguous to the public



- **Purpose:** Start with the WHY

# Participant feedback

- Having the online session was beneficial as it allowed the complex content to be delivered with time to process before the interactive co-design.
- Participants agreed that there is a need to communicate with the public about the work which is going on. It is important to communicate this in a way which is concise and digestible
- It was a strength to have the Akrivia team there. They are the people who own, write and run the website. Therefore, they could respond in real-time as to how to change it.
- Having a quick turnaround and something visual resulted in high engagement, as it appeared to make PPI members feel like their voices were actually influencing the output.

“it wasn’t half as bad as I thought it was going to be”

- Feedback from one satisfied participant 😊

Thank you for listening

Any Questions?

Email: [e.m.ford@bsms.ac.uk](mailto:e.m.ford@bsms.ac.uk)

Website: [www.bsms.ac.uk/dr-elizabeth-ford/](http://www.bsms.ac.uk/dr-elizabeth-ford/)

