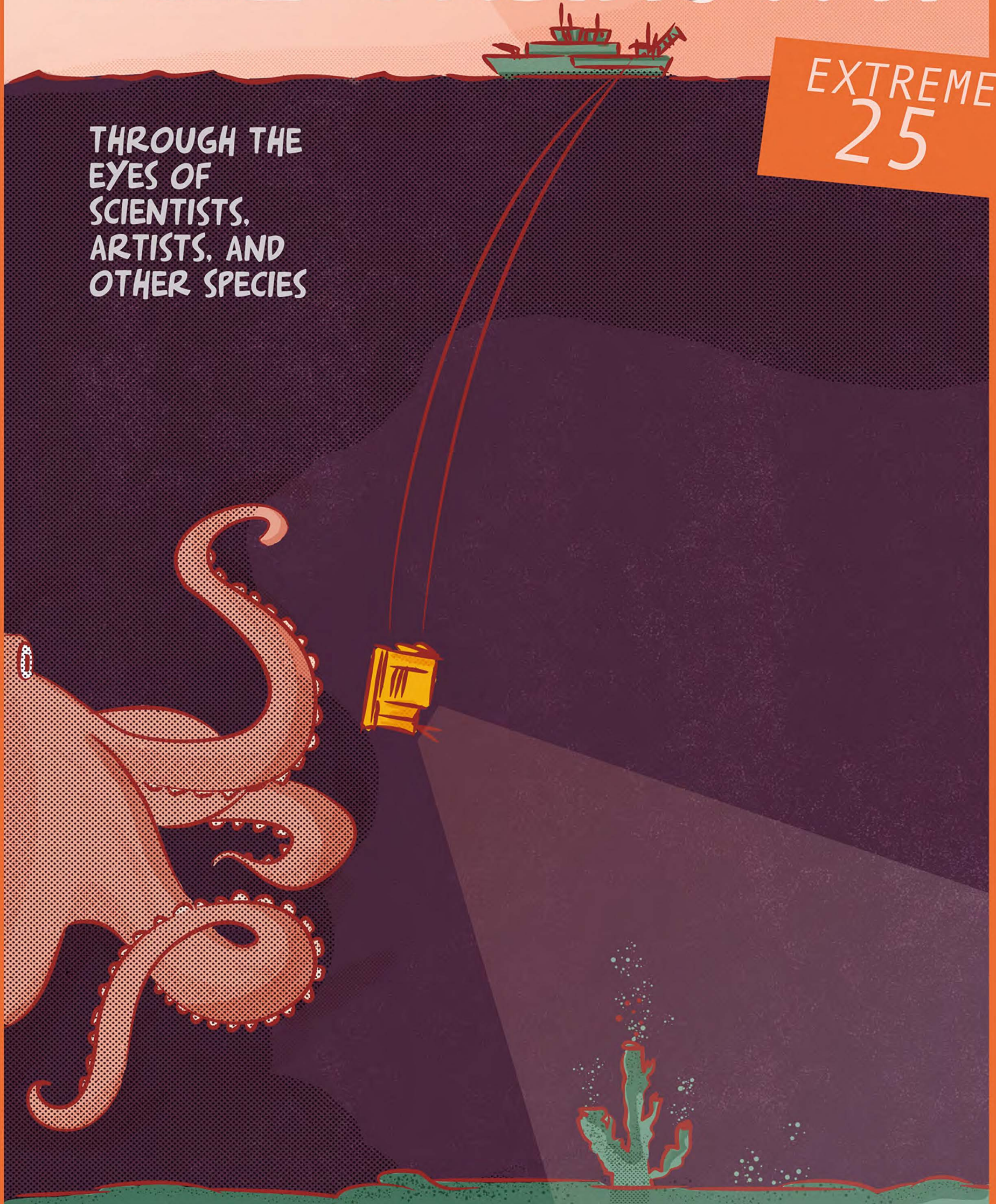


EXPLORING THE UNKNOWN

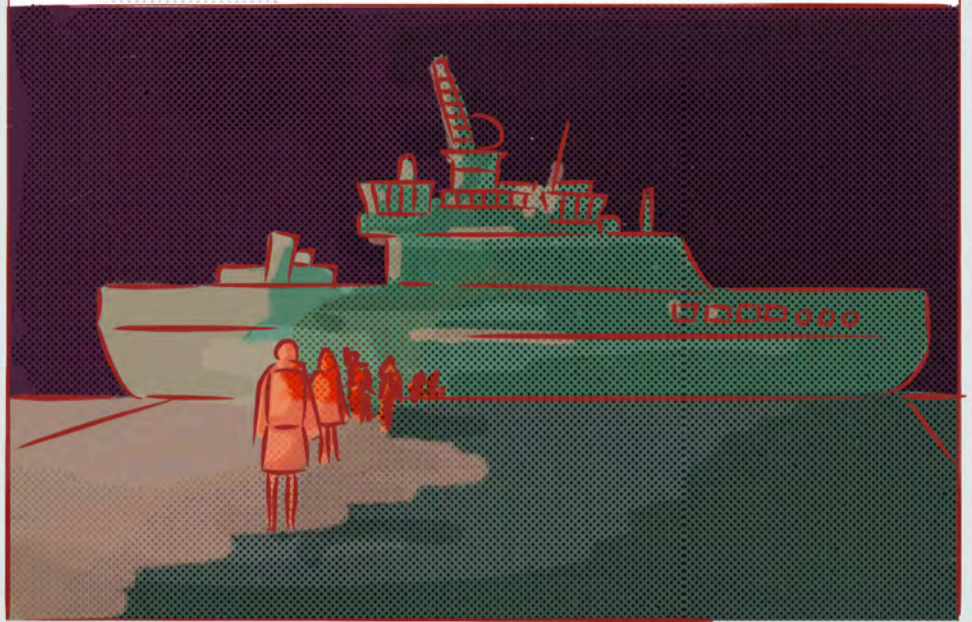
EXTREME
25

THROUGH THE
EYES OF
SCIENTISTS,
ARTISTS, AND
OTHER SPECIES

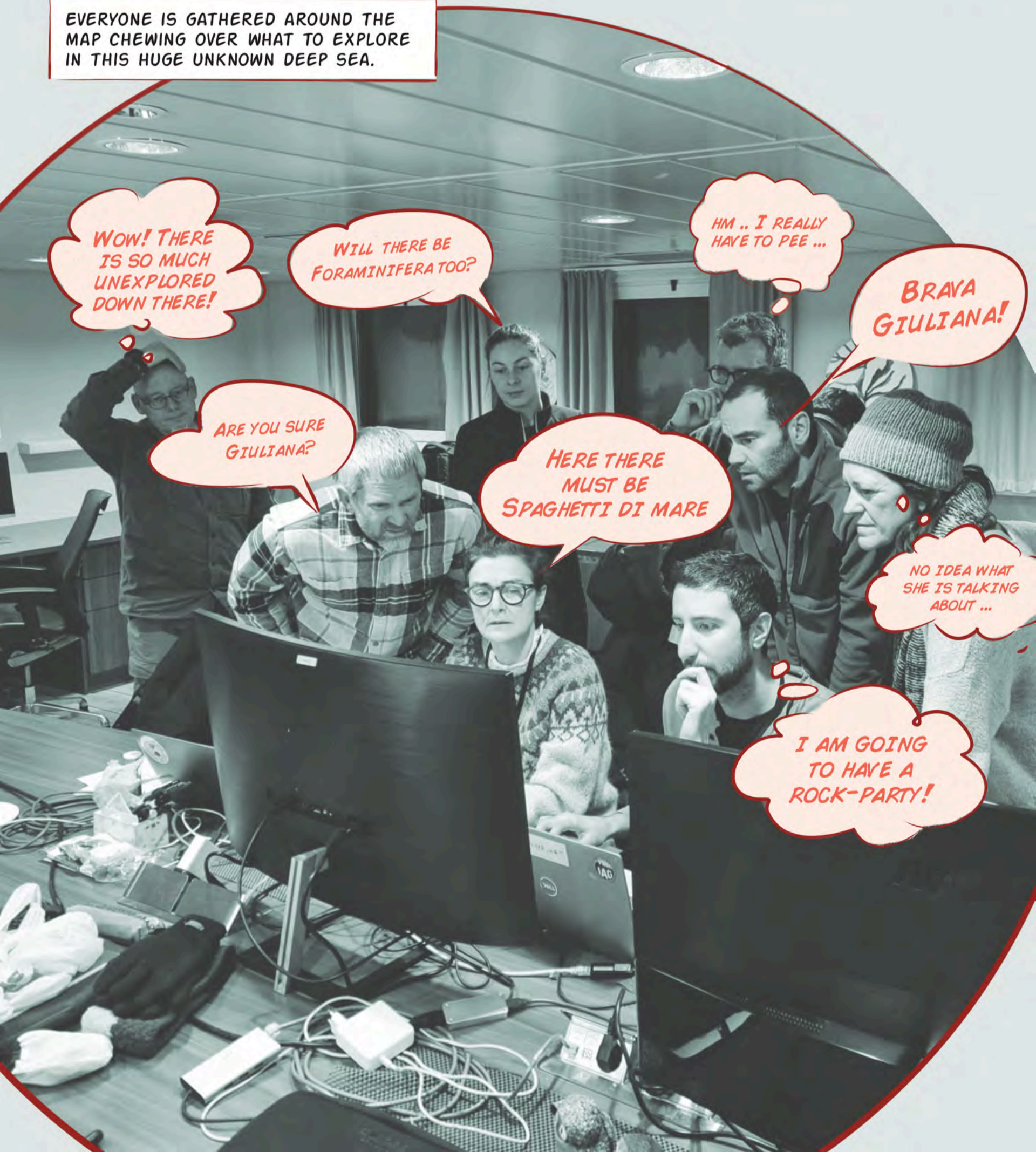


DATE: 18.NOV 2025 SVALBARD, NORWAY

THE SCIENTISTS, ARTISTS, TECHNICIANS AND CREW ARE RETURNING BACK TO THE RESEARCH VESSEL ..



EVERYONE IS GATHERED AROUND THE MAP CHEWING OVER WHAT TO EXPLORE IN THIS HUGE UNKNOWN DEEP SEA.



WOW! THERE IS SO MUCH UNEXPLORED DOWN THERE!

WILL THERE BE FORAMINIFERA TOO?

HM .. I REALLY HAVE TO PEE ...

BRAVA GIULIANA!

ARE YOU SURE GIULIANA?

HERE THERE MUST BE SPAGHETTI DI MARE

NO IDEA WHAT SHE IS TALKING ABOUT ...

I AM GOING TO HAVE A ROCK-PARTY!

GIULIANA'S RECIPE FOR SPAGHETTI DI MARE

INGREDIENTS:

500G TUBEWORMS

500G SHELLS

1CUP OF SEDIMENT


SPICE IT WITH BACTERIA

ECCO ;)

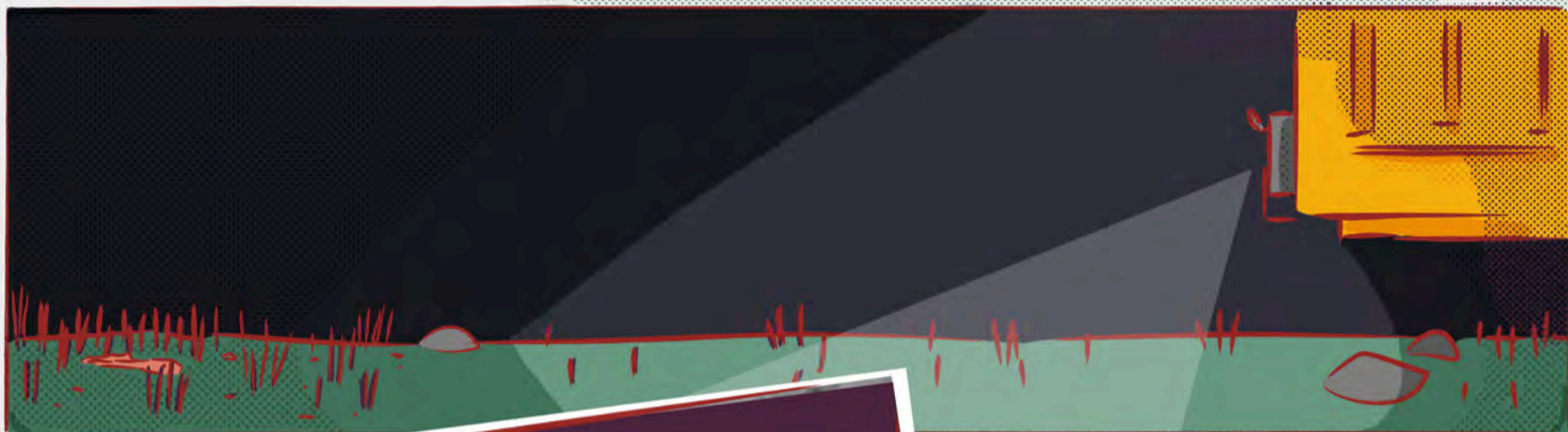
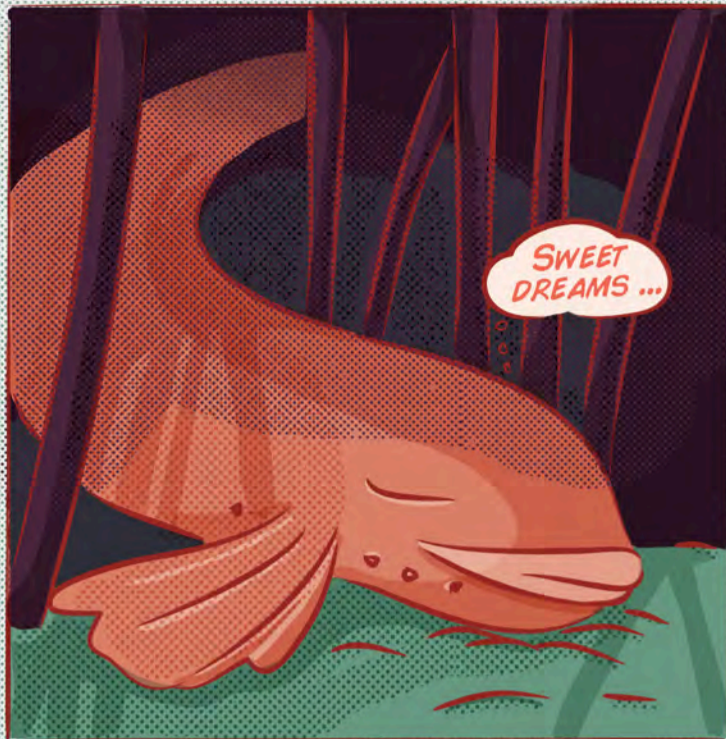
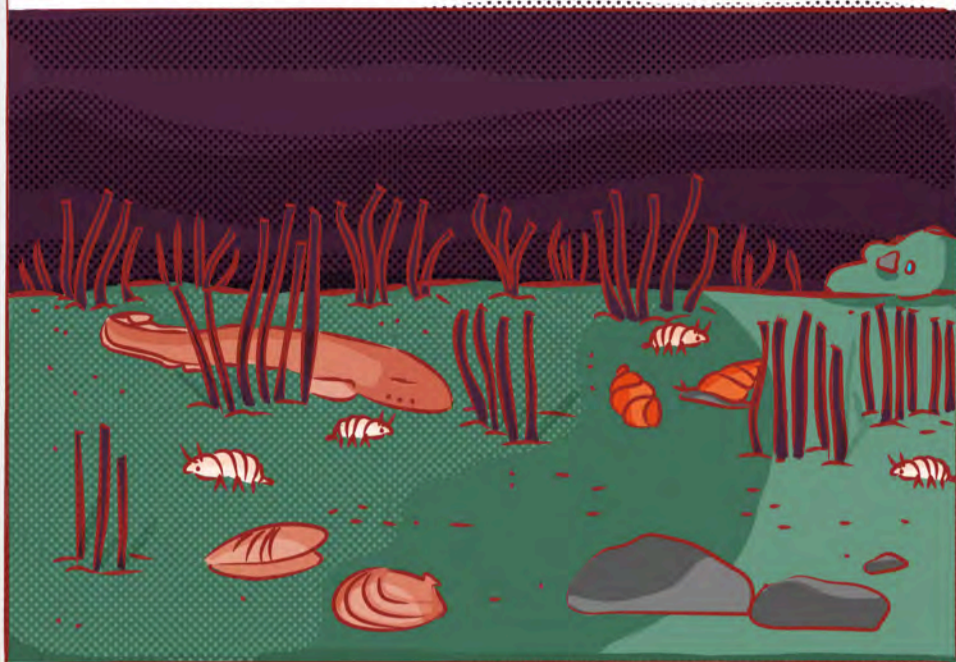
BUON APPETITO



TUBEWORM SUPERPOWERS:

- THEY DON'T HAVE A DIGESTIVE SYSTEM BUT GET FOOD FROM MICROBES LIVING INSIDE THEM
 - THEY DON'T NEED SUN (PHOTOSYNTHESIS) AND HAVE REPLACED IT WITH CHEMOSYNTHESIS, SO CHEMICALS DO THEIR MAGIC
 - THEY HAVE BLOOD AS HUMANS DO, WITH HIGH HAEMAGLOBIN TO TRANSPORT THE CHEMICALS
 - THEY CREATE SEEP SEA FORESTS THAT OTHERS USE AS THEIR HABITAT
- 

MEANWHILE ON THE SEAFLOOR



LYCENCHELYS PLATRYRHINA



Photo: Artsdatabanken

3 AMAZING FACTS ABOUT LYCENCHELYS PLATRYRHINA

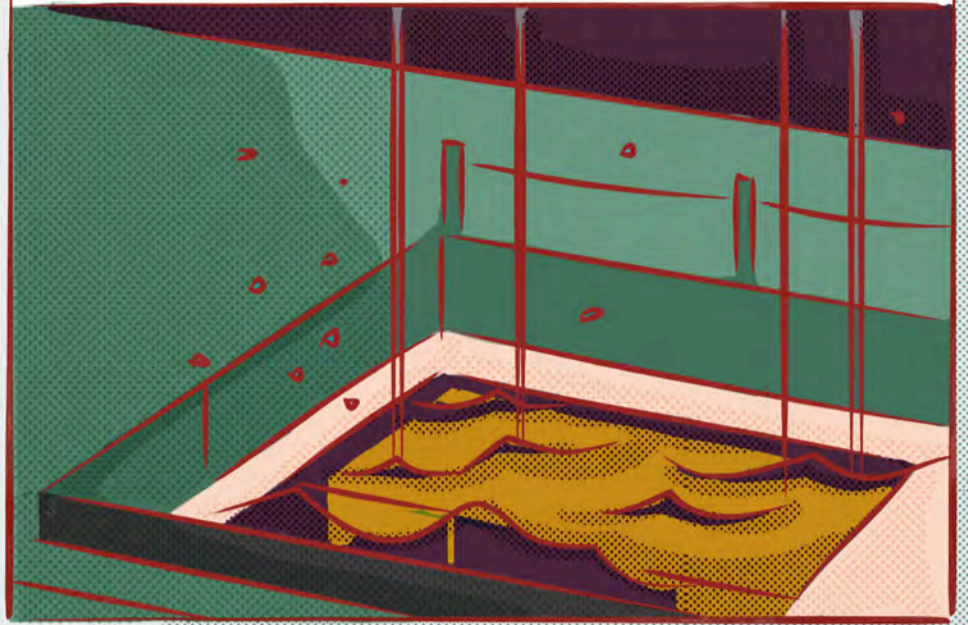
- LOVES TO HANG OUT AND FEED IN TUBEWORM FORESTS
- HAS NO SCALES JUST A VERY SMOOTH SKIN
- LIVES MORE THAN 1000 M DEEP ON THE SEAFLOOR.



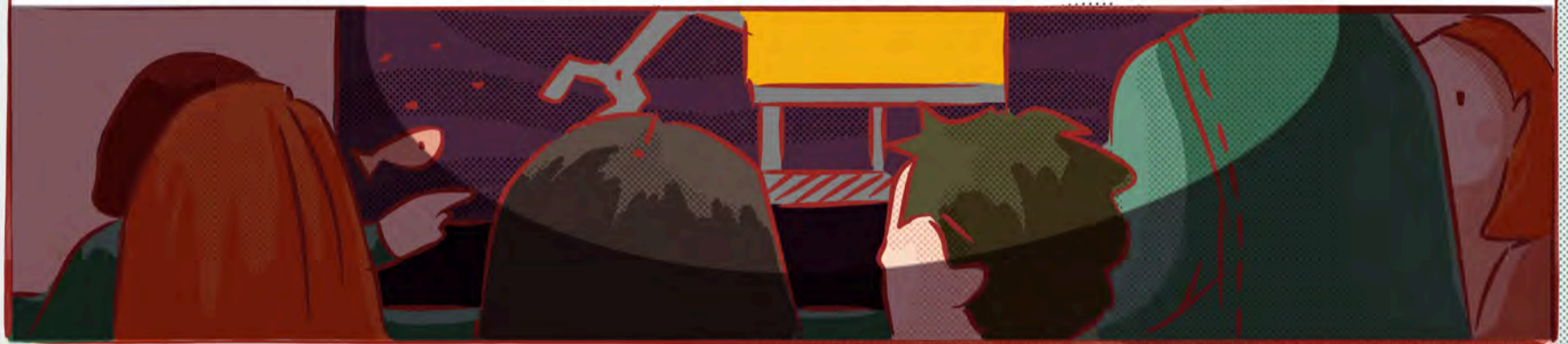
LATE AFTERNOON, ÆGIR 6000 (THE ROV ROBOT) IS READY TO GET INTO ACTION



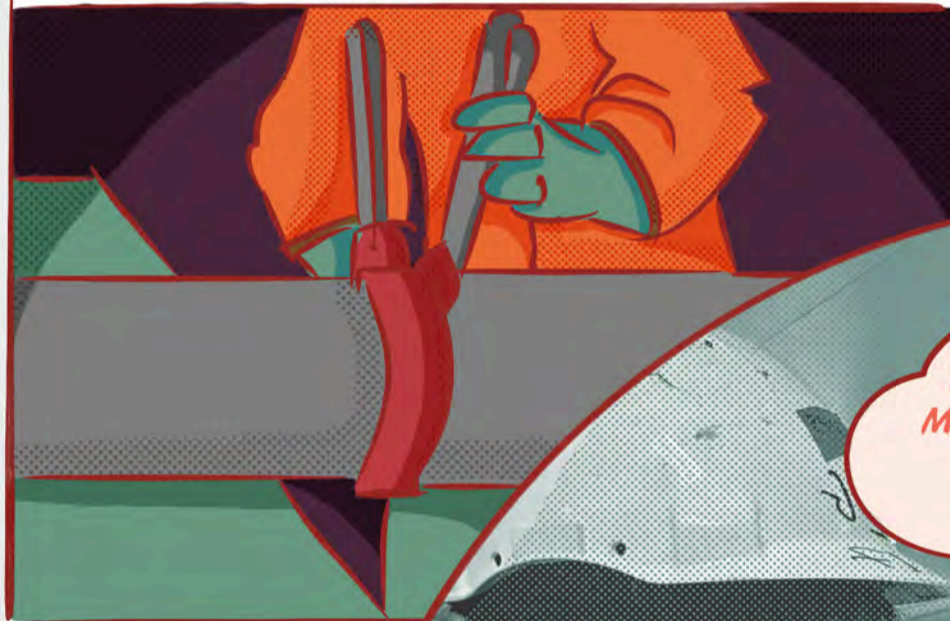
IT DISAPPEARS INTO THE UNKNOWN, PACKED WITH GRAVITY CORES AND MULTICORES FOR SAMPLING



THE SCIENCE TEAM IS WATCHING EACH METER THE ROV HOVERS OVER THE BOTTOM ON THE MONITOR



BACK ON THE SHIP, THE GRAVITY CORE IS OPENED AND SCIENTISTS STARTS TO CUT AND PACK THE SAMPLES



HIHI

THERE IS BLOOD ON MY SEDIMENT SAMPLE FROM THE TUBEWORMS!!!

BLOOD? I DID NOT KNOW THAT TUBEWORMS HAVE BLOOD ..

3 AMAZING FACTS ABOUT DEEP SEA SEDIMENT

- THE COLOUR OF SEDIMENT CAN INDICATE OXYGEN. THE DARKER THE COLOUR THE LESS OXYGEN.
- SEDIMENTS CAN BE SMOOTH AND MUDDY OR REALLY SANDY
- SEDIMENTS ARE FULL OF LIFE, LIKE FORAMINIFERA, WORMS OR BACTERIA





WHAT ARE YOU
LOOKING FOR?

MY
TUBEWORMS

PUKEWORMS

ITTY BITTY
WORMS

CAN'T
FIND THEM!

THE OTHERS ARE SIEVING THE SAND SAMPLES
ALREADY IN THE OTHER ROOM



GOSH, YOU ARE
SOO CUTE

FINALLY MARI CAN SIT IN HER LAB AND SORT OUT
THE SAMPLES

- HOW THE SIEVING
PROCESS WORKS:
- TAKE A SAMPLE OF
SEDIMENT
 - RINSE AND SIEVE
 - RINSE AND SIEVE
 - RINSE AND SIEVE
 - RINSE AND SIEVE AGAIN
 - RINSE AND SIEVE JUST
ONE MORE TIME
 - RINSE AND SIEVE A
LAST TIME
 - OKAY, RINSE AND SIEVE
JUST ONE MORE LAST
TIME
 - PUT THE SIEVED
SAMPLE IN A TRAY
READY TO GO UNDER
THE MICROSCOPE



ONE RESEARCHER IN PARTICULAR IS INTERESTED IN VERY VERY TINY CREATURES ...

WHICH CAN BE FOUND IN SEDIMENTS BUT ALSO ON SPONGES!

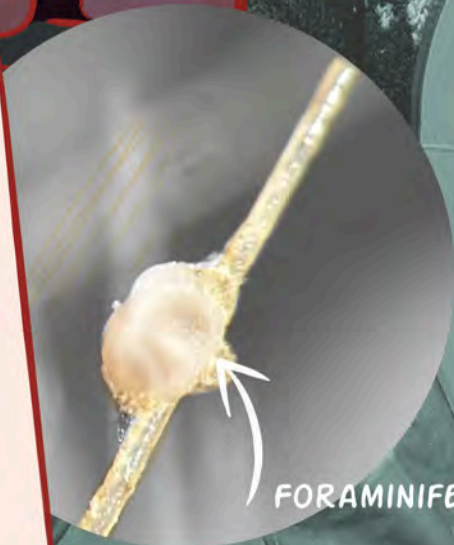


AS SOON AS THE SAMPLES ARE BACK ON BOARD, IT IS TIME TO INVESTIGATE THE SPONGE

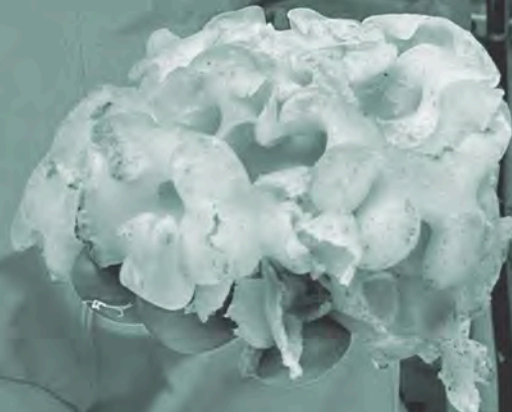


3 AMAZING FACTS ABOUT SPONGES AND FORAMINIFERA

- SPONGES ARE HARD, AND ARE COVERED BY NEEDLE LIKE SKIN WHICH PROTECTS THEM FROM PREDATORS
- THE HOLES OF SPONGES ARE HOME FOR MANY DIFFERENT TYPES OF FORAMINIFERA
- SOME FORAMINIFERA LOVE THE SPIKES AND USE THEM AS THEIR HOME



FORAMINIFERA





CLAUDIO IS A GEOSCIENTIST WITH A PASSION FOR SEDIMENTS AND A MISSION TO ADVANCE THE RESEARCH ON EXTREME ENVIRONMENTS MAINLY USING SEDIMENTOLOGICAL AND GEOCHEMICAL TECHNIQUES, AS WELL AS PASSING ON THIS SPECIALIZED KNOWLEDGE TO A NEW GENERATION OF FUTURE RESEARCHERS.



THORGERDUR HAS A PASSION FOR ROCKS AND OCEAN DEBRIS. SHE IS CURIOUS OF EXPLORING THE STORIES THEY TELL AND THE RITUALS BEHIND THE SAMPLING OF THESE FINDS, ON THEIR TRAVEL TO ANOTHER AFTERLIFE - A NEW HERITAGE.



SARAH IS A RESEARCHER AND ENGINEER WORKING ON DEVELOPING DIFFERENT OCEANS SENSOR MEASURING DISSOLVED GASSES, WHICH THERE ARE, HOW MUCH, DO THE GASSES REACH THE SEA SURFACE OR ENTER THE ATMOSPHERE.



THE CAPTAIN IS THE HEART OF THE SHIP. HE ALWAYS IS WELCOMING ON THE BRIDGE WITH A BIG SMILE. HE CONTROLS THE VESSELS AS IF IT WAS A SCIENCE FICTION ROBOT ON HIS CONTROLLER CHAIR. THE BEST OF ALL IS THAT HE CARES ABOUT THE ENVIRONMENT ONBOARD, ARRANGING AN EVENING BINGO TO EVERYONE'S AMAZEMENT.



KENNETH IS THE COOK WHO DOES MAGIC WITH HIS POTS AND PANS. HE MIXES AND MATCHES, VEGETABLES, FISH, CARBS AND GREENS, AND KNOWS HOW TO PUT A BIG SMILE ON EVERYONE'S FACE BY SERVING LARGE PORTION OF ICE CREAM WITH A LOT OF CHOCOLATE SAUCE!



THE ARTIST JOHN ALWAYS HAS A WONDERFUL SMILE ON HIS ON HIS FACE. HE ALMOST WALKS SILENTLY AND UNSEEN AROUND IN HIS CHASE CREATING UNDERWATER SWARMS OF DEEP SEA IMAGINARIES OF SOUNDS ONE CANNOT IMAGINE.

MUD VOLCANO BORALIS
IN THE BARENTS SEA.



SO NICE HERE!!
MY FAV SPOT

I LIKE TO HANG
OUT HERE WITH MY
FAMILY

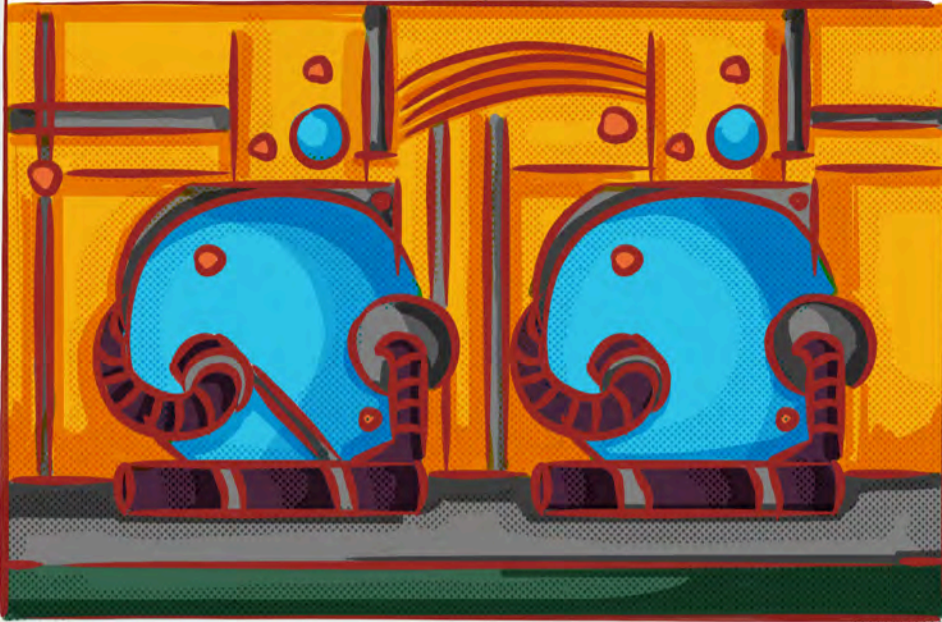
COMING!!
BLOB BLOB

HENRY, COME
OVER!
WE WILL HAVE
A SPA DAY

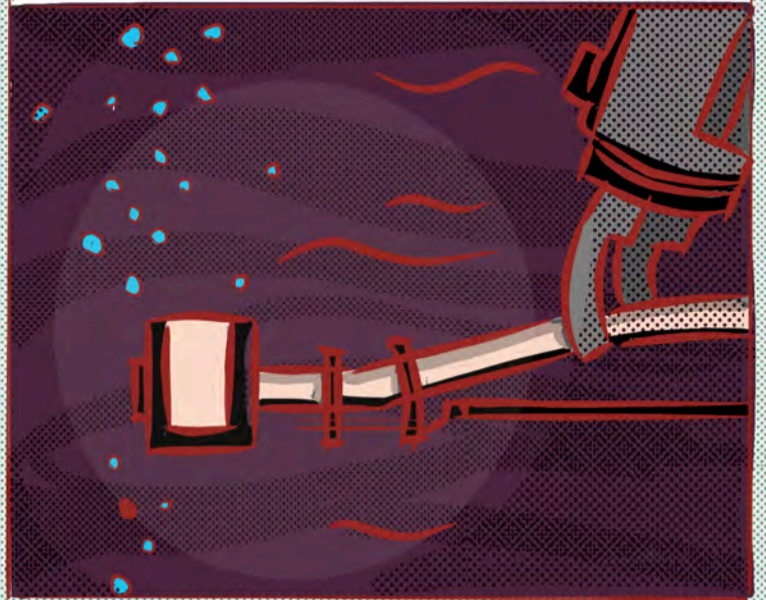
3 AMAZING FACTS
BORALIS MUD VOLCANO

- IT SUPPORTS
VULNERABLE SPECIES IN
THE BARENTS SEA, LIKE
A SANCTUARY
- THE SEDIMENTS WHICH
ARE RELEASED DATE
BACK 1.7 MILL YEARS AGO
- BORALIS IS AN
EXPRESSION ON HOW
ALIVE AND DYNAMIC OUR
PLANET IS

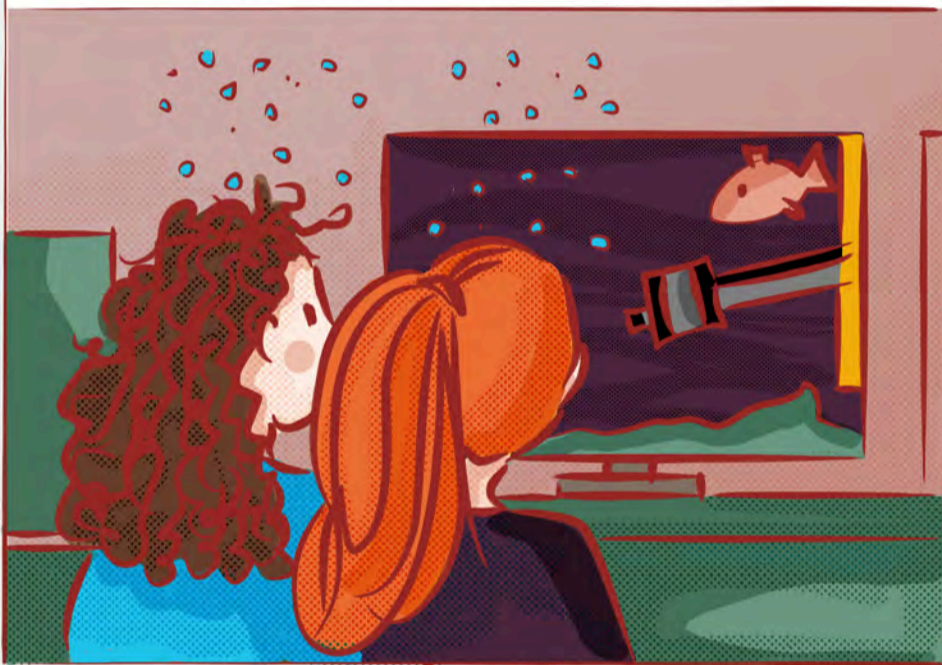
LATE AT NIGHT, THE BUBBLE GIRLS WERE WORKING TO FIX AN ISSUE WITH THEIR GAS SENSOR



THE NEXT DAY, THEY MANAGED TO FIX THE PROBLEM AND COULD CONTINUE WITH THEIR WORK



HAPPY GIRLS ARE BUBBLING THE SEAFLOOR

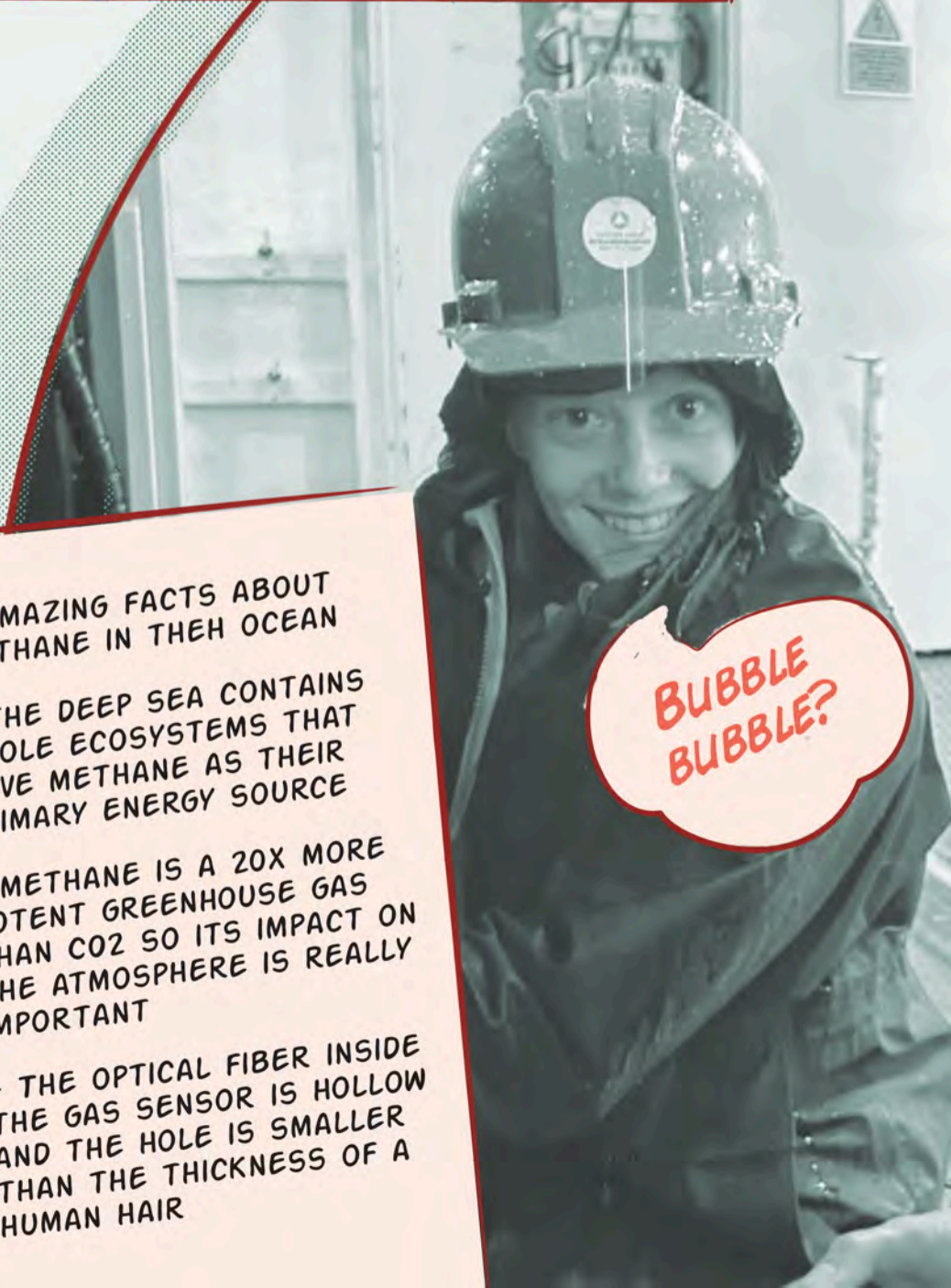


BUBBLE
BUBBUBBLE
BUBB

3 AMAZING FACTS ABOUT METHANE IN THE OCEAN

- THE DEEP SEA CONTAINS WHOLE ECOSYSTEMS THAT HAVE METHANE AS THEIR PRIMARY ENERGY SOURCE
- METHANE IS A 20X MORE POTENT GREENHOUSE GAS THAN CO2 SO ITS IMPACT ON THE ATMOSPHERE IS REALLY IMPORTANT
- THE OPTICAL FIBER INSIDE THE GAS SENSOR IS HOLLOW AND THE HOLE IS SMALLER THAN THE THICKNESS OF A HUMAN HAIR

BUBBLE
BUBBLE?



AT 5:30 AM, THE TEAM STARTS PREPARING BREAKFAST, WHICH IS SERVED TO ALL CREW MEMBERS AT 7:30



AFTERWARDS, THE KITCHEN MUST BE CLEANED, AND THE PREPARATIONS FOR 12:30 LUNCH BEGIN

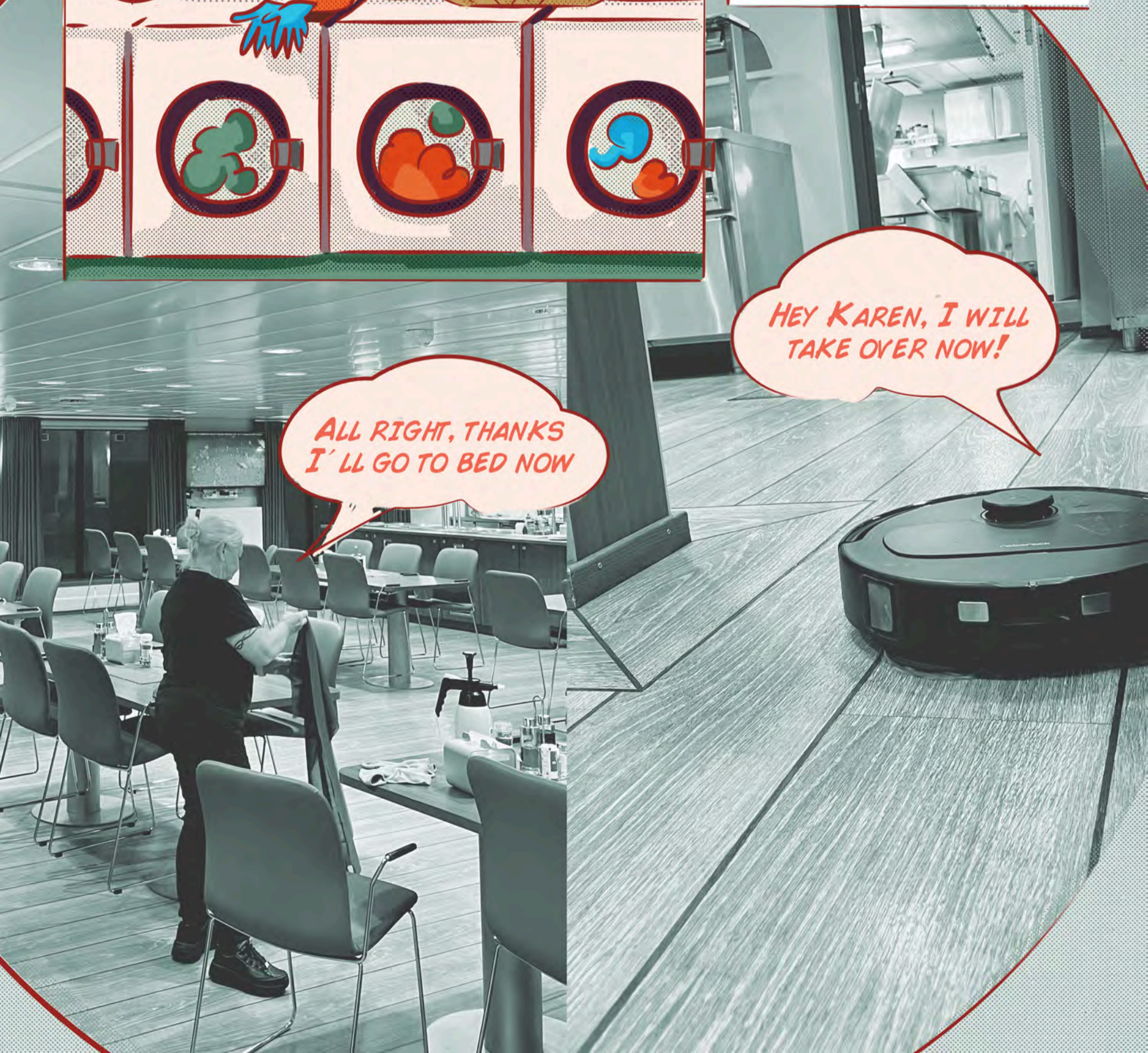
BEFORE PREPARING FOR DINNER, THERE IS A LOT OF WASHING, CLEANING, AND OTHER THINGS NEED TO BE DONE



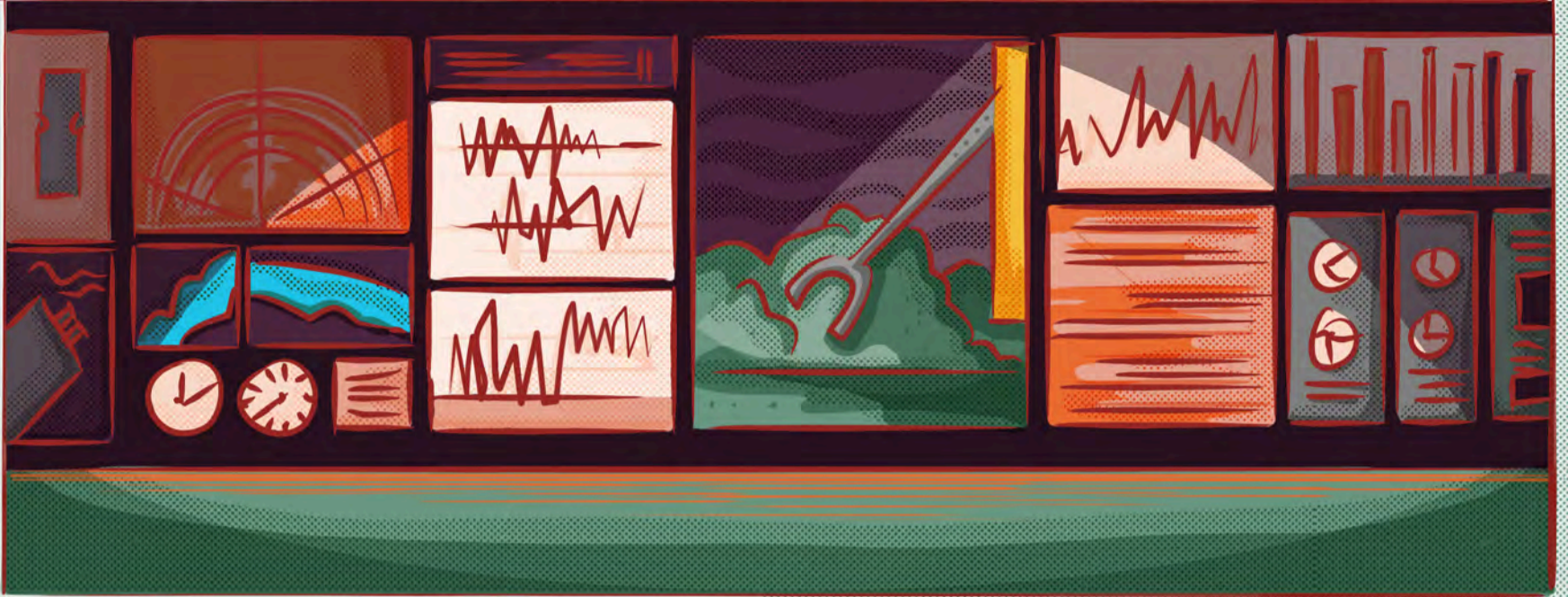
DINNER IS SERVED FROM 5 TO 7, AFTER WHICH THE LITTLE ROBOTS BEGIN CLEANING THE FLOORS AND CONTINUE THROUGHOUT THE EVENING AND NIGHT UNTIL THE NEXT DAY!

HEY KAREN, I WILL TAKE OVER NOW!

ALL RIGHT, THANKS I'LL GO TO BED NOW



THE ROV CONTAINER IS FULL OF SCREENS, WITH A LOT OF INTERESTING NUMBERS AND LINES ..



THE MULTIBEAM MAPPING SHOWS EVERY DETAIL FROM THE SEAFLOOR ON SCREEN



WE HAVE TO GO DOWN HERE..

AH YOU KNOW, LET'S TRY IT HERE!

OR MAYBE HERE?

THIS LOOKS ALSO PRETTY GOOD

3 AMAZING FACTS ABOUT SEAFLOOR MAPPING

- ROV MULTIBEAM MAPPING CAN REVEAL FEATURES SMALLER THAN IXIM
- PHOTOGRAMMETRY TURNS VIDEOS IN REAL 3D MODELS AND LET US VIRTUALLY EXPLORE THE SEAFLOOR
- IT CAN TARGET HOTSPOTS MORE EFFICIENTLY AND SAVES VALUABLE SHIP TIME WHICH IS EXPENSIVE.



THE CREW FINALLY ARRIVED IN TROMSØ, AFTER 2,5 WEEKS ON THE ARCTIC OCEAN



ZA ZDOROVIYE!

TSCHUESS

HADE

ARRIYEDERCI

SJAUMST

ADJO

ADIOS

FARVEL

BYE

EXTREME25
LEG2

I AM GOING TO
MISS THESE
HUMANS ...

THIS CRUISE WAS TRULY FANTASTIC. WE EXPLORED THE DEEP SEA AND ITS UNIVERSE OF SPARKLING SEA STARS, MICROBIOTIC BLOOMS, SPUNGES OF INCREDIBLE SHAPE AND SIZES, WORM FOREST, MUD VOLCANOS AND EXTREME ENVIRONMENTS OF THE DEEP.

IT SPARKED NEW FRIENDSHIPS, CONVERSATIONS AND COLLABORATIONS, AND OPENED OUR EYES IN MANY NEW AND DIFFERENT WAYS. IT HAS BEEN A COMMUNITY OF LAUGHTER, SUPPORT, POSITIVITY, SMILES AND CHOCOLATE AND CANDY ON THE TABLE, AND BY THE END, WE HAD BECOME ONE BIG FAMILY ONBOARD.

NOW EVERYONE IS HEADING BACK HOME TO WORK ON THEIR SAMPLES AND IDEAS